



TYPE APPROVAL CERTIFICATE
No. **ELE196009CS/001**

This is to certify that the product below is found to be in compliance with the applicable requirement of the RINA type approval system.

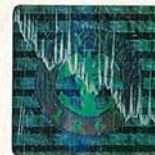
<i>Description</i>	ELECTRIC CABLES
<i>Type</i>	LKM-HF 0.6/1 kV
<i>Applicant</i>	HELKAMA BICA OY LAKIMIEHENKATU 4 FIN 20780 KAARINA FINLAND
<i>Manufacturer</i>	HELKAMA BICA OY
<i>Place of manufacture</i>	LAKIMIEHENKATU 4 FIN 20780 KAARINA FINLAND
<i>Reference standards</i>	IEC 60092-350; IEC 60092-353

Issued in **Genoa** on **April 8, 2010**. This Certificate is valid until **April 8, 2015**



RINA
Valerio Bonanni

This certificate consists of this page and 1 enclosure





TYPE APPROVAL CERTIFICATE

No. **ELE196009CS/001**

Enclosure - Page 1 of 1

LKM-HF 0.6/1 kV

Materials/Components

Shipboard power cables, flame retardant, low smoke emission, halogen free.

Rated voltage: 0.6/1 kV

Type: LKM-HF 0.6/1 kV

Marking: "lot number" LKM-HF n x s mm² 0.6/1 kV 90°C IEC 60092-353 IEC 60332-3-22 HELKAMA "month-year"
"length marking"

Construction:

conductor: stranded red copper (IEC 60228 Class 2 or Class 5)

insulation: XLPE

inner covering: separator tape wrapping

sheath: SHF1

In accordance to IEC 60228 cl.2 and cl.5; IEC 60092-350; IEC 60092-351; IEC 60092-353; IEC 60092-359; IEC 60754-1; IEC 61034-1; IEC 61034-2; IEC 60332-1; IEC 60332-3-22.

Maximum conductor temperature: 90°C

Number of conductors: 1 - cross sectional area 1,5 - 300 mm²

Number of conductors: 2 - cross-sectional area 1,5 - 95 mm²

Number of conductors: 3 - cross-sectional area 1,5 - 240 mm²

Number of conductors: 4 - cross-sectional area 1,5 - 120 mm²

Number of conductors: 5 - cross-sectional area 1,5- 25 mm²

Number of conductors: 7,10,12,14,16,19,24,27,37 - cross sectional area 1,5 - 2,5 mm².

Technical Specification: HELKAMA SPECIFICATION HBKQ 9.SPEC.3 1.11.2006/dk.

Genoa April 6, 2010